

Luminaire Photograph

1510.021F.3BTTA 3000K
RISE



C Range: 0 - 360DEG
C Interval: 30.0DEG
Test Speed: HIGH
Temperature:25.3DEG
Operators:Lanjunbao
Test Date:2016-10-20

g Range: 0 - 180DEG
g Interval: 1.0DEG
Test System:EVERFINE GO-R3000(2M2D) SYSTEM V1.0.203
Humidity:65.0%
Test Distance:2.500m [K=1.0094]
Remarks: LAMP:HL-A-3014H421W-S1-08-HR 3000K
1W DC 24V
30minutes warm-up

LUMINOUS INTENSITY DISTRIBUTION DIAGRAM

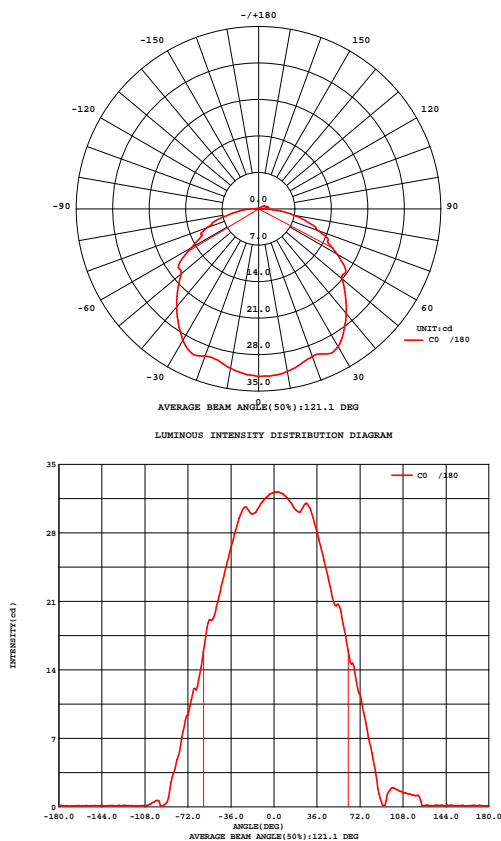


Fig. C0/C180

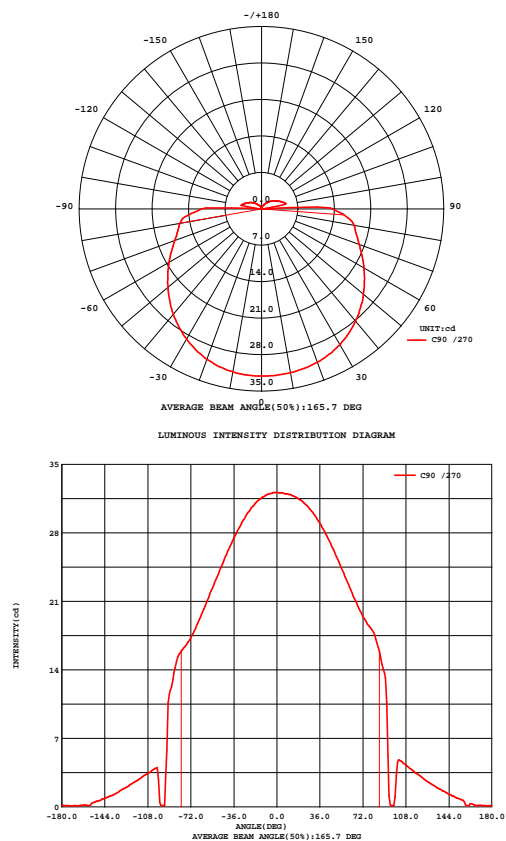


Fig. C90/C270

C Range: 0 - 360DEG
 C Interval: 30.0DEG
 Test Speed: HIGH
 Temperature:25.3DEG
 Operators:Lanjunbao
 Test Date:2016-10-20

g Range: 0 - 180DEG
 g Interval: 1.0DEG
 Test System:EVERFINE GO-R3000(2M2D) SYSTEM V1.0.203
 Humidity:65.0%
 Test Distance:2.500m [K=1.0094]
 Remarks: LAMP:HL-A-3014H421W-S1-08-HR 3000K
 1W DC 24V
 30minutes warm-up

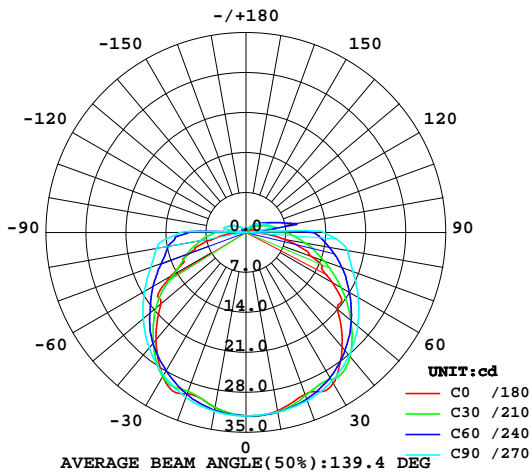


LUMINAIRE PHOTOMETRIC TEST REPORT

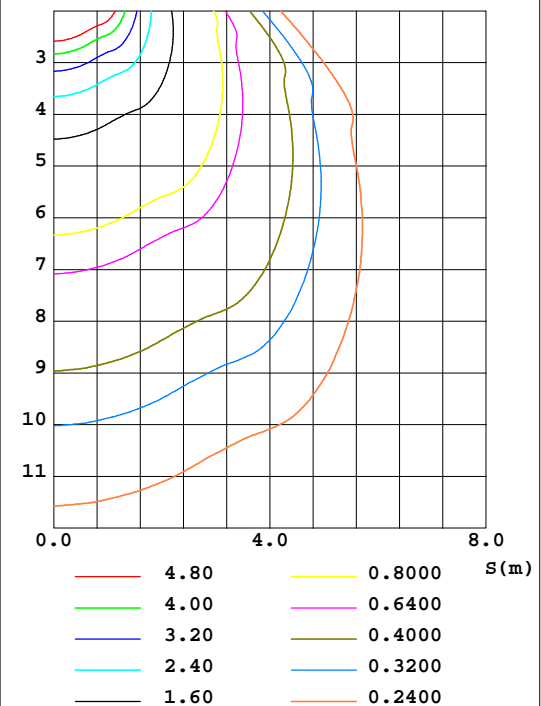
Test:U:23.98V I:0.0605A P:1.450W PF:1.000 Lamp Flux:162.8x1 lm		
NAME: 1510.021F.3BTTA	TYPE:	WEIGHT:
DIMENSION:	SPECIFICATION:3000K	SERIAL No.:1610198590
MANUFACTURER: RISE	SURFACE:0.00341946m2	PROTECTION ANGLE:

DATA OF LAMP		PHOTOMETRIC DATA Eff: 91.76 lm/W			
MODEL	HONGLI 3014	Imax(cd)	32.16	S/MH(C0/180)	1.32
NOMINAL POWER(W)	1	EFFICIENCY(%)	81.7	S/MH(C90/270)	1.34
RATED VOLTAGE(V)	24	TOTAL FLUX(lm)	133.08	h UP(C0-180)	2.9
NOMINAL FLUX(lm)	162.83	CIE CLASS	DIRECT	h DN(C0-180)	36.5
LAMPS INSIDE	1	h up(%)	6.4	h UP(C180-360)	3.5
TEST VOLTAGE(V)	24.0	h down(%)	75.4	h DN(C180-360)	38.9

LUMINOUS INTENSITY DISTRIBUTION DIAGRAM



C0 PLANE ISOLUX DIAGRAM (UNIT:lx)



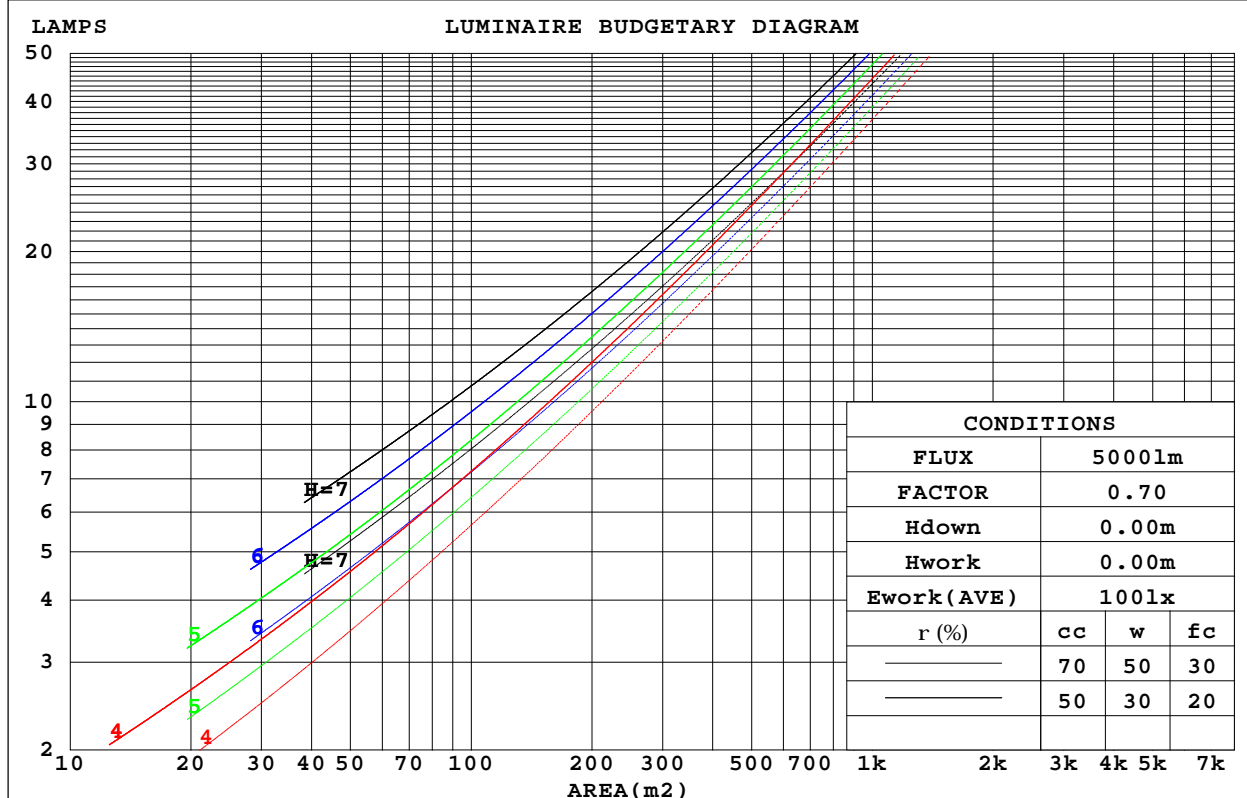
C Range: 0 - 360DEG
 C Interval: 30.0DEG
 Test Speed: HIGH
 Temperature:25.3DEG
 Operators:Lanjunbao
 Test Date:2016-10-20

g Range: 0 - 180DEG
 g Interval: 1.0DEG
 Test System:EVERFINE GO-R3000(2M2D) SYSTEM V1.0.203
 Humidity:65.0%
 Test Distance:2.500m [K=1.0094]
 Remarks: LAMP:HL-A-3014H421W-S1-08-HR 3000K
 1W DC 24V
 30minutes warm-up



CU AND LUMINAIRE BUDGETARY ESTIMATE DIAGRAM

rcc	80%			70%			50%			30%			10%			0
rw	50%	30%	10%	50%	30%	10%	50%	30%	10%	50%	30%	10%	50%	30%	10%	0
rhc	20%			20%			20%			20%			20%			0
RCR	RCR:Room Cavity Ratio Coefficients of Utilization(CU)															
0.0	.96	.96	.96	.93	.93	.93	.87	.87	.87	.82	.82	.82	.78	.78	.78	.75
1.0	.80	.75	.71	.77	.73	.69	.72	.69	.66	.68	.65	.63	.64	.62	.60	.57
2.0	.68	.61	.56	.66	.60	.55	.62	.57	.52	.58	.54	.50	.55	.51	.48	.46
3.0	.59	.51	.45	.57	.50	.44	.54	.48	.43	.50	.45	.41	.47	.43	.40	.37
4.0	.52	.44	.38	.50	.43	.37	.47	.41	.36	.44	.39	.35	.42	.37	.33	.31
5.0	.46	.38	.32	.45	.37	.31	.42	.36	.31	.40	.34	.30	.37	.33	.29	.27
6.0	.41	.33	.28	.40	.33	.27	.38	.31	.26	.36	.30	.26	.34	.29	.25	.23
7.0	.37	.29	.24	.36	.29	.24	.34	.28	.23	.32	.27	.23	.31	.26	.22	.20
8.0	.34	.26	.21	.33	.26	.21	.31	.25	.21	.30	.24	.20	.28	.23	.20	.18
9.0	.31	.24	.19	.30	.23	.19	.29	.23	.18	.27	.22	.18	.26	.21	.18	.16
10.0	.28	.22	.17	.28	.21	.17	.26	.21	.17	.25	.20	.16	.24	.19	.16	.14



C Range: 0 - 360DEG
 C Interval: 30.0DEG
 Test Speed: HIGH
 Temperature: 25.3DEG
 Operators: Lanjunbao
 Test Date: 2016-10-20

g Range: 0 - 180DEG
 g Interval: 1.0DEG
 Test System: EVERFINE GO-R3000(2M2D) SYSTEM V1.0.203
 Humidity: 65.0%
 Test Distance: 2.500m [K=1.0094]
 Remarks: LAMP: HL-A-3014H421W-S1-08-HR 3000K
 1W DC 24V
 30minutes warm-up



ZONAL FLUX DIAGRAM

ZONAL FLUX DIAGRAM:

g	C0	C45	C90	C135	C180	C225	C270	C315	g	F zone	F total	%lum,lamp
10	31.11	31.32	31.76	31.88	31.70	31.91	31.91	31.39	0- 10	3.042	3.042	2.29,1.87
20	30.05	29.87	30.72	30.58	30.18	30.75	31.34	30.01	10- 20	8.774	11.82	8.88,7.26
30	29.14	28.55	28.85	29.12	30.54	29.54	30.09	29.17	20- 30	13.83	25.65	19.3,15.8
40	24.51	25.32	26.37	26.94	26.17	27.65	28.13	26.42	30- 40	17.57	43.22	32.5,26.5
50	19.50	21.29	23.48	23.21	20.96	24.04	25.54	22.83	40- 50	19.03	62.24	46.8,38.2
60	15.01	16.67	20.53	19.10	17.41	20.04	22.69	18.89	50- 60	18.68	80.92	60.8,49.7
70	10.40	13.42	17.71	15.48	12.15	16.18	19.96	14.87	60- 70	16.66	97.58	73.3,59.9
80	5.191	10.93	15.88	12.06	6.660	12.65	18.04	12.75	70- 80	14.22	111.8	84,68.7
90	0.4025	7.652	11.56	7.401	0.4637	9.254	13.68	8.923	80- 90	10.94	122.7	92.2,75.4
100	0.5450	0.9635	4.020	6.596	1.959	7.153	3.218	1.135	90-100	2.974	125.7	94.5,77.2
110	0.1539	0.1204	3.290	3.905	1.441	4.389	4.105	0.1391	100-110	2.912	128.6	96.6,79
120	0.1230	0.2887	2.496	2.468	1.183	2.841	3.169	0.6862	110-120	1.842	130.5	98,80.1
130	0.1652	0.5239	1.729	1.632	0.1427	1.913	2.303	0.8543	120-130	1.244	131.7	99,80.9
140	0.1092	0.4296	1.095	0.7104	0.1831	0.8231	1.612	0.7626	130-140	0.7713	132.5	99.5,81.4
150	0.1362	0.3039	0.5851	0.6115	0.1337	0.8276	0.9502	0.4351	140-150	0.3778	132.9	99.8,81.6
160	0.1319	0.1342	0.1836	0.3249	0.1292	0.4308	0.1335	0.2771	150-160	0.1535	133.0	99.9,81.7
170	0.0915	0.1129	0.1419	0.1844	0.1362	0.2353	0.1454	0.1447	160-170	0.0593	133.1	100,81.7
180	0.1481	0.1479	0.1404	0.1577	0.1009	0.1320	0.1231	0.1188	170-180	0.0144	133.1	100,81.7
DEG	LUMINOUS INTENSITY:cd									UNIT:lm		

C Range: 0 - 360DEG
 C Interval: 30.0DEG
 Test Speed: HIGH
 Temperature:25.3DEG
 Operators:Lanjunbao
 Test Date:2016-10-20

g Range: 0 - 180DEG
 g Interval: 1.0DEG
 Test System:EVERFINE GO-R3000(2M2D) SYSTEM V1.0.203
 Humidity:65.0%
 Test Distance:2.500m [K=1.0094]
 Remarks: LAMP:HL-A-3014H421W-S1-08-HR 3000K
 1W DC 24V
 30minutes warm-up



WEC AND CCEC

rcc	80%			70%			50%			30%			10%			0
rw	50%	30%	10%	50%	30%	10%	50%	30%	10%	50%	30%	10%	50%	30%	10%	0
rfc	20%			20%			20%			20%			20%			0
RCR	RCR:Room Cavity Ratio						Wall Exitance Coefficients(WEC)									
0.0																
1.0	.326	.185	.059	.318	.181	.058	.303	.174	.056	.290	.167	.054	.277	.161	.052	
2.0	.281	.154	.047	.274	.151	.047	.261	.145	.045	.249	.139	.044	.237	.134	.042	
3.0	.249	.133	.040	.243	.130	.039	.231	.125	.038	.220	.121	.037	.210	.116	.036	
4.0	.224	.116	.034	.218	.114	.034	.208	.110	.033	.198	.106	.032	.188	.102	.031	
5.0	.203	.104	.030	.198	.102	.030	.188	.098	.029	.180	.095	.028	.171	.091	.027	
6.0	.186	.093	.027	.181	.092	.026	.173	.089	.026	.165	.086	.025	.157	.083	.025	
7.0	.171	.085	.024	.167	.083	.024	.159	.081	.023	.152	.078	.023	.145	.075	.022	
8.0	.159	.078	.022	.155	.076	.022	.148	.074	.021	.141	.072	.021	.135	.069	.020	
9.0	.148	.072	.020	.144	.070	.020	.138	.068	.019	.132	.066	.019	.126	.064	.019	
10.0	.138	.066	.018	.135	.065	.018	.129	.063	.018	.124	.061	.017	.118	.060	.017	

rcc	80%			70%			50%			30%			10%			0
rw	50%	30%	10%	50%	30%	10%	50%	30%	10%	50%	30%	10%	50%	30%	10%	0
rfc	20%			20%			20%			20%			20%			0
RCR	RCR:Room Cavity Ratio			Ceiling Cavity Exitance Coefficients(CCEC)												
0.0	.204	.204	.204	.174	.174	.174	.119	.119	.119	.068	.068	.068	.022	.022	.022	
1.0	.201	.176	.153	.172	.151	.132	.118	.104	.091	.068	.060	.053	.022	.019	.017	
2.0	.196	.157	.124	.168	.135	.107	.115	.093	.075	.066	.054	.044	.021	.018	.014	
3.0	.189	.143	.106	.162	.123	.092	.111	.086	.065	.064	.050	.038	.021	.016	.012	
4.0	.183	.133	.094	.157	.115	.082	.108	.080	.058	.062	.047	.034	.020	.015	.011	
5.0	.176	.124	.086	.151	.108	.075	.104	.075	.053	.060	.044	.031	.019	.014	.010	
6.0	.170	.118	.080	.146	.102	.070	.101	.071	.049	.059	.042	.029	.019	.014	.010	
7.0	.164	.112	.076	.141	.097	.066	.098	.068	.047	.057	.040	.028	.018	.013	.009	
8.0	.158	.108	.073	.136	.093	.063	.094	.066	.045	.055	.039	.027	.018	.013	.009	
9.0	.153	.104	.070	.132	.090	.061	.091	.063	.043	.053	.037	.026	.017	.012	.009	
10.0	.148	.100	.068	.128	.087	.059	.089	.061	.042	.052	.036	.025	.017	.012	.008	

C Range: 0 - 360DEG
 C Interval: 30.0DEG
 Test Speed: HIGH
 Temperature:25.3DEG
 Operators:Lanjunbao
 Test Date:2016-10-20

g Range: 0 - 180DEG
 g Interval: 1.0DEG
 Test System:EVERFINE GO-R3000(2M2D) SYSTEM V1.0.203
 Humidity:65.0%
 Test Distance:2.500m [K=1.0094]
 Remarks: LAMP:HL-A-3014H421W-S1-08-HR 3000K
 1W DC 24V
 30minutes warm-up



Uncorrected UGR Table

ceiling/cavity	0.7	0.7	0.5	0.5	0.3	0.7	0.7	0.5	0.5	0.3
walls	0.5	0.3	0.5	0.3	0.3	0.5	0.3	0.5	0.3	0.3
working plane	0.2	0.2	0.2	0.2	0.2	0.2	0.2	0.2	0.2	0.2
Room dimensions	Viewed crosswise					Viewed endwise				
x = 2H y = 2H	19.3	20.8	19.7	21.2	21.6	20.7	22.2	21.1	22.6	23.0
3H	21.0	22.5	21.4	22.8	23.2	23.3	24.7	23.7	25.1	25.5
4H	21.9	23.3	22.4	23.7	24.1	24.8	26.1	25.2	26.5	27.0
6H	22.6	23.9	23.1	24.3	24.8	26.5	27.8	26.9	28.2	28.7
8H	22.9	24.2	23.4	24.6	25.1	27.5	28.7	27.9	29.2	29.6
12H	23.2	24.4	23.6	24.8	25.3	28.6	29.8	29.0	30.2	30.7
4H 2H	20.2	21.5	20.6	21.9	22.4	21.2	22.6	21.7	23.0	23.4
3H	22.1	23.3	22.6	23.7	24.2	24.1	25.3	24.6	25.8	26.2
4H	23.1	24.3	23.6	24.7	25.2	25.8	26.9	26.3	27.4	27.9
6H	24.0	25.1	24.6	25.5	26.1	27.8	28.8	28.3	29.3	29.8
8H	24.4	25.4	25.0	25.9	26.5	28.9	29.8	29.4	30.3	30.9
12H	24.8	25.7	25.4	26.2	26.8	30.1	31.0	30.6	31.5	32.1
8H 4H	24.0	24.9	24.5	25.4	26.0	26.2	27.1	26.7	27.6	28.2
6H	25.2	26.0	25.8	26.5	27.1	28.5	29.3	29.0	29.8	30.4
8H	25.8	26.5	26.4	27.1	27.7	29.8	30.5	30.4	31.1	31.7
12H	26.3	27.0	26.9	27.5	28.2	31.3	31.9	31.9	32.5	33.1
12H 4H	24.3	25.2	24.9	25.7	26.3	26.2	27.1	26.8	27.6	28.2
6H	25.7	26.4	26.3	27.0	27.6	28.6	29.3	29.2	29.9	30.5
8H	26.4	27.1	27.0	27.6	28.3	30.0	30.7	30.6	31.2	31.9
Variations with the observer position at spacings:										
S = 1.0H	+ 0.1 / - 0.1					+ 0.1 / - 0.1				
1.5H	+ 0.2 / - 0.2					+ 0.2 / - 0.3				
2.0H	+ 0.1 / - 0.4					+ 0.2 / - 0.3				

CIE Pub.117 Corrected 162.8 lm Total Lamp Luminous Flux.(8log(F/F0) = -6.3)

C Range: 0 - 360DEG
 C Interval: 30.0DEG
 Test Speed: HIGH
 Temperature:25.3DEG
 Operators:Lanjunbao
 Test Date:2016-10-20

g Range: 0 - 180DEG
 g Interval: 1.0DEG
 Test System:EVERFINE GO-R3000(2M2D) SYSTEM V1.0.203
 Humidity:65.0%
 Test Distance:2.500m [K=1.0094]
 Remarks: LAMP:HL-A-3014H421W-S1-08-HR 3000K
 1W DC 24V
 30minutes warm-up



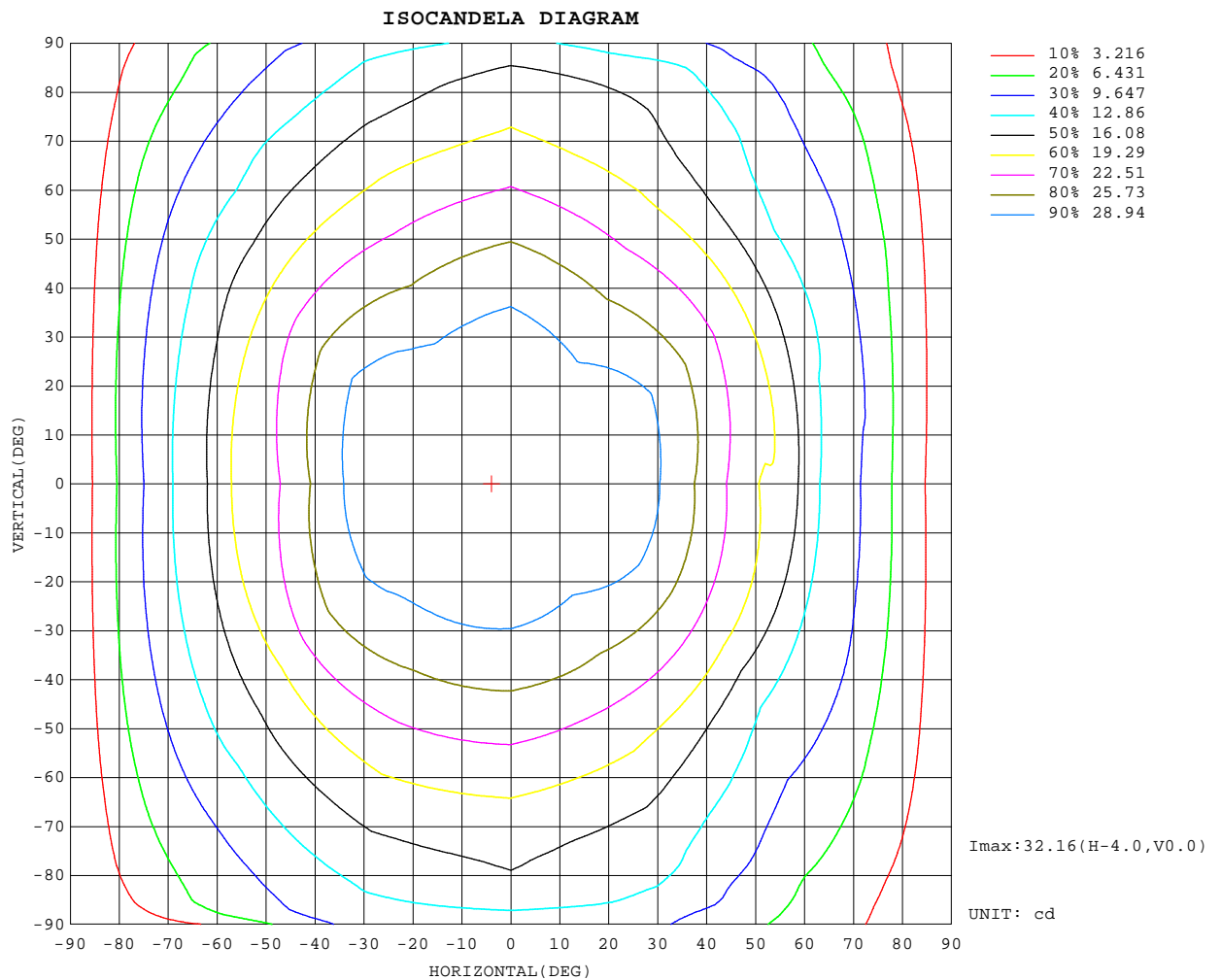
UTILIZATION FACTORS TABLE

REFLECTANCE										
Ceiling	0.8	0.8	0.8	0.7	0.7	0.7	0.5	0.5	0.5	0
Walls	0.7	0.5	0.3	0.7	0.5	0.3	0.7	0.5	0.3	0
Working plane	0.2	0.2	0.2	0.2	0.2	0.2	0.2	0.2	0.2	0
ROOM INDEX	UTILIZATION FACTORS(PERCENT) $k(RI) \times RCR = 5$									
$k = 0.60$	41	31	25	41	31	25	39	30	25	19
0.80	49	38	32	48	38	32	46	37	31	25
1.00	55	45	38	54	44	38	52	45	37	30
1.25	61	51	44	59	50	44	57	48	43	35
1.50	65	55	49	63	54	48	60	52	47	39
2.00	71	62	56	69	61	55	65	59	53	45
2.50	75	67	60	72	65	59	68	62	57	48
3.00	78	70	65	75	69	63	71	65	61	52
4.00	82	75	70	79	73	69	74	70	66	56
5.00	84	78	74	81	76	72	76	72	69	59
ROOM INDEX	UF(total)									Direct
According to DIN EN 13032-2 2004			Suspended					SHRNOM = 1.25		

C Range: 0 - 360DEG
 C Interval: 30.0DEG
 Test Speed: HIGH
 Temperature:25.3DEG
 Operators:Lanjunbao
 Test Date:2016-10-20

g Range: 0 - 180DEG
 g Interval: 1.0DEG
 Test System:EVERFINE GO-R3000(2M2D) SYSTEM V1.0.203
 Humidity:65.0%
 Test Distance:2.500m [K=1.0094]
 Remarks: LAMP:HL-A-3014H421W-S1-08-HR 3000K
 1W DC 24V
 30minutes warm-up

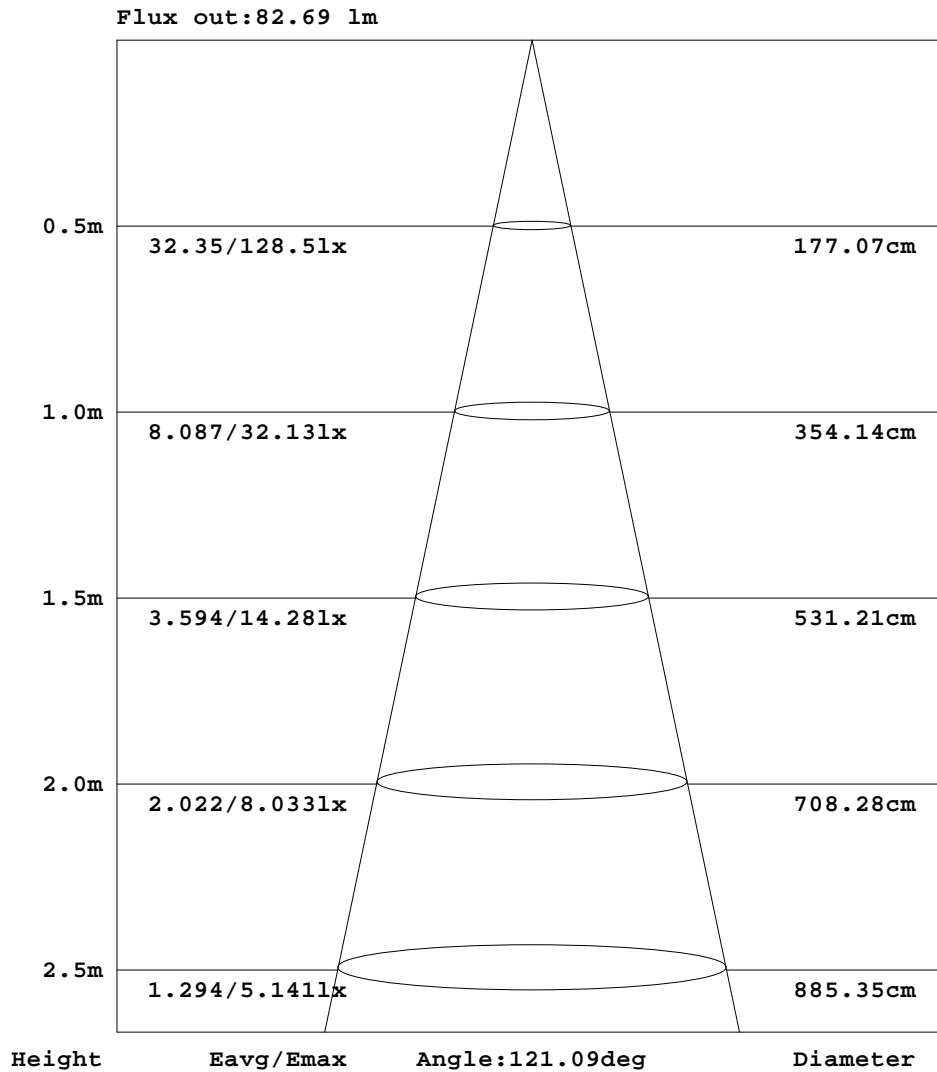
ISOCANDELA DIAGRAM



C Range: 0 - 360DEG
C Interval: 30.0DEG
Test Speed: HIGH
Temperature:25.3DEG
Operators:Lanjunbao
Test Date:2016-10-20

g Range: 0 - 180DEG
g Interval: 1.0DEG
Test System:EVERFINE GO-R3000(2M2D) SYSTEM V1.0.203
Humidity:65.0%
Test Distance:2.500m [K=1.0094]
Remarks: LAMP:HL-A-3014H421W-S1-08-HR 3000K
1W DC 24V
30minutes warm-up

AAI Figure



Note:The Curves indicate the illuminated area and the average illumination when the luminaire is at different distance.

C Range: 0 - 360DEG
 C Interval: 30.0DEG
 Test Speed: HIGH
 Temperature:25.3DEG
 Operators:Lanjunbao
 Test Date:2016-10-20

g Range: 0 - 180DEG
 g Interval: 1.0DEG
 Test System:EVERFINE GO-R3000(2M2D) SYSTEM V1.0.203
 Humidity:65.0%
 Test Distance:2.500m [K=1.0094]
 Remarks: LAMP:HL-A-3014H421W-S1-08-HR 3000K
 1W DC 24V
 30minutes warm-up



LUMINOUS DISTRIBUTION INTENSITY DATA

Table--1

UNIT: cd

C(DEG) g (DEG)	0	30	60	90	120	150	180	210	240	270	300	330						
0	32.1	32.1	32.1	32.1	32.1	32.1	32.1	32.1	32.1	32.1	32.1	32.1						
5	31.8	31.8	32.0	32.0	32.1	32.1	32.1	32.1	32.1	32.1	31.9	31.8						
10	31.1	31.1	31.6	31.8	32.0	31.8	31.7	31.9	31.9	31.9	31.6	31.2						
15	30.1	30.1	31.0	31.3	31.6	31.1	30.9	31.3	31.6	31.7	31.1	30.4						
20	30.1	29.6	30.2	30.7	31.0	30.2	30.2	30.4	31.1	31.3	30.4	29.7						
25	30.6	29.8	29.1	29.9	30.1	29.4	30.8	29.7	30.3	30.8	29.6	29.7						
30	29.1	29.1	28.0	28.8	29.1	29.2	30.5	29.7	29.4	30.1	28.6	29.8						
35	26.9	27.5	26.7	27.7	27.8	28.9	28.6	29.7	28.3	29.2	27.5	28.5						
40	24.5	25.3	25.4	26.4	26.4	27.5	26.2	28.3	27.0	28.1	26.2	26.7						
45	22.0	23.0	23.8	24.9	24.9	25.4	23.6	26.3	25.6	26.9	24.8	24.6						
50	19.5	20.6	22.0	23.5	23.3	23.1	21.0	24.0	24.1	25.5	23.3	22.4						
55	18.8	17.9	20.4	22.0	21.8	20.4	20.4	21.7	22.5	24.1	21.7	20.2						
60	15.0	14.6	18.8	20.5	20.2	18.0	17.4	19.2	20.9	22.7	20.2	17.6						
65	11.9	12.5	17.2	19.1	18.6	15.9	14.6	16.9	19.4	21.3	18.7	14.5						
70	10.4	11.0	15.8	17.7	17.1	13.8	12.2	14.5	17.9	20.0	17.3	12.4						
75	8.28	9.42	14.6	16.7	15.7	11.8	9.63	12.4	16.4	18.8	16.4	11.1						
80	5.19	8.02	13.8	15.9	14.2	9.93	6.66	10.5	14.8	18.0	15.7	9.83						
85	3.04	6.53	12.5	14.2	12.6	8.29	3.61	8.68	13.4	16.3	14.4	8.39						
90	0.40	5.22	10.1	11.6	11.2	3.56	0.46	6.75	11.8	13.7	11.1	6.78						
95	0.14	1.80	0.17	0.16	0.17	4.29	1.33	0.10	0.16	0.20	0.15	1.49						
100	0.55	1.49	0.44	4.02	8.17	5.02	1.96	5.22	9.08	3.22	0.13	2.14						
105	0.22	0.34	0.16	3.68	5.89	4.19	1.65	4.46	6.63	4.60	0.15	0.48						
110	0.15	0.13	0.11	3.29	4.65	3.16	1.44	3.61	5.17	4.11	0.13	0.14						
115	0.12	0.11	0.17	2.85	3.63	2.45	1.27	2.86	4.11	3.60	0.68	0.12						
120	0.12	0.16	0.42	2.50	2.93	2.01	1.18	2.32	3.36	3.17	1.25	0.13						
125	0.18	0.11	0.79	2.09	2.33	1.67	0.14	1.93	2.73	2.70	1.47	0.14						
130	0.17	0.15	0.90	1.73	1.89	1.37	0.14	1.58	2.24	2.30	1.50	0.21						
135	0.15	0.19	0.87	1.35	1.55	1.09	0.17	1.34	1.81	1.91	1.39	0.29						
140	0.11	0.12	0.74	1.10	1.25	0.17	0.18	0.18	1.47	1.61	1.15	0.37						
145	0.15	0.14	0.60	0.84	0.93	0.49	0.17	0.34	1.17	1.26	0.93	0.15						
150	0.14	0.15	0.45	0.59	0.72	0.50	0.13	0.70	0.95	0.95	0.59	0.28						
155	0.11	0.14	0.13	0.37	0.17	0.44	0.15	0.58	0.17	0.72	0.12	0.21						
160	0.13	0.11	0.16	0.18	0.28	0.37	0.13	0.42	0.44	0.13	0.35	0.20						
165	0.13	0.14	0.11	0.15	0.20	0.27	0.13	0.33	0.30	0.21	0.22	0.15						
170	0.09	0.10	0.12	0.14	0.16	0.21	0.14	0.26	0.21	0.15	0.15	0.14						
175	0.12	0.15	0.15	0.13	0.12	0.21	0.12	0.17	0.16	0.16	0.14	0.12						
180	0.15	0.13	0.17	0.14	0.16	0.16	0.10	0.15	0.12	0.12	0.11	0.13						

C Range: 0 - 360DEG
 C Interval: 30.0DEG
 Test Speed: HIGH
 Temperature:25.3DEG
 Operators:Lanjunbao
 Test Date:2016-10-20

g Range: 0 - 180DEG
 g Interval: 1.0DEG
 Test System:EVERFINE GO-R3000(2M2D) SYSTEM V1.0.203
 Humidity:65.0%
 Test Distance:2.500m [K=1.0094]
 Remarks: LAMP:HL-A-3014H421W-S1-08-HR 3000K
 1W DC 24V
 30minutes warm-up



Photometric Data Table [cd]

G/C	0.0	30.0	60.0	90.0	120.0	150.0	180.0	210.0	240.0	270.0
0.0	32.13	32.08	32.13	32.10	32.10	32.11	32.13	32.08	32.13	32.10
3.0	31.97	31.90	32.05	32.10	32.14	32.13	32.15	32.14	32.10	32.07
6.0	31.66	31.63	31.90	31.99	32.09	32.07	32.07	32.09	32.06	32.01
9.0	31.26	31.24	31.66	31.84	32.01	31.88	31.82	31.97	32.00	31.98
12.0	30.74	30.76	31.37	31.64	31.83	31.60	31.42	31.68	31.85	31.87
15.0	30.13	30.13	30.98	31.35	31.57	31.11	30.92	31.32	31.59	31.69
18.0	29.93	29.72	30.56	30.99	31.28	30.59	30.37	30.81	31.29	31.47
21.0	30.26	29.58	29.98	30.60	30.79	30.04	30.12	30.23	30.91	31.26
24.0	30.65	29.80	29.39	30.07	30.31	29.55	30.52	29.79	30.51	30.91
27.0	30.13	29.76	28.69	29.47	29.71	29.19	31.04	29.52	29.97	30.53
30.0	29.14	29.13	27.98	28.85	29.08	29.17	30.54	29.71	29.37	30.09
33.0	27.82	28.20	27.23	28.17	28.31	29.20	29.46	29.92	28.75	29.55
36.0	26.42	27.02	26.44	27.43	27.51	28.69	28.08	29.56	28.02	28.97
39.0	25.01	25.69	25.63	26.64	26.66	27.81	26.68	28.73	27.26	28.34
42.0	23.52	24.34	24.75	25.81	25.80	26.72	25.20	27.55	26.41	27.65
45.0	21.97	22.97	23.77	24.95	24.92	25.45	23.62	26.25	25.61	26.88
48.0	20.45	21.56	22.72	24.08	23.95	24.03	21.99	24.90	24.68	26.12
51.0	19.19	20.13	21.60	23.22	22.99	22.61	20.61	23.50	23.75	25.26
54.0	19.12	18.46	20.67	22.31	22.11	20.96	20.70	22.13	22.81	24.43
57.0	17.46	16.53	19.74	21.42	21.17	19.38	19.34	20.66	21.86	23.56
60.0	15.01	14.56	18.78	20.53	20.21	17.99	17.41	19.22	20.86	22.69
63.0	12.93	13.22	17.84	19.67	19.23	16.72	15.39	17.78	19.95	21.85
66.0	12.12	12.14	16.95	18.81	18.31	15.54	14.70	16.36	19.13	21.03
69.0	11.00	11.26	16.07	17.98	17.42	14.29	12.89	15.00	18.19	20.20
72.0	9.396	10.33	15.30	17.30	16.52	13.05	11.56	13.61	17.28	19.46
75.0	8.277	9.415	14.63	16.71	15.67	11.82	9.629	12.44	16.35	18.84
78.0	6.251	8.518	14.10	16.24	14.82	10.69	7.927	11.44	15.41	18.36
81.0	4.861	7.785	13.61	15.69	13.88	9.589	6.164	10.14	14.49	17.83
84.0	3.485	6.880	12.65	14.82	12.93	8.555	4.341	9.020	13.63	16.69
87.0	1.874	6.035	11.99	13.00	12.10	7.733	1.990	7.977	12.79	15.25
90.0	0.4025	5.222	10.08	11.56	11.24	3.562	0.4637	6.750	11.76	13.68
93.0	0.1129	0.1248	3.934	2.843	2.667	0.3223	0.1690	0.2135	0.1298	5.207
96.0	0.5916	3.261	0.1389	0.1623	0.1929	5.694	1.558	1.755	0.2665	0.1589
99.0	0.6462	1.883	0.3581	2.760	7.533	5.170	1.977	5.401	8.981	0.9981
102.0	0.4334	0.8967	0.1315	3.926	7.064	4.704	1.820	4.897	7.919	4.819
105.0	0.2162	0.3377	0.1564	3.684	5.892	4.185	1.649	4.463	6.633	4.596
108.0	0.1552	0.1640	0.1490	3.417	5.089	3.525	1.437	3.936	5.634	4.284
111.0	0.1371	0.1391	0.1819	3.234	4.361	3.004	1.391	3.447	4.895	3.979
114.0	0.1323	0.1007	0.1533	2.941	3.806	2.610	1.324	3.014	4.316	3.721
117.0	0.0966	0.1009	0.1789	2.706	3.301	2.292	1.213	2.621	3.811	3.411
120.0	0.1230	0.1622	0.4152	2.496	2.928	2.008	1.183	2.318	3.365	3.169
123.0	0.1429	0.1235	0.7193	2.262	2.551	1.787	0.5758	2.034	2.947	2.855
126.0	0.1542	0.1310	0.8600	2.024	2.237	1.605	0.1375	1.848	2.632	2.610
129.0	0.1424	0.1118	0.8920	1.832	1.972	1.386	0.1674	1.625	2.356	2.367
132.0	0.1250	0.1477	0.8880	1.581	1.739	1.248	0.1433	1.506	2.065	2.180
135.0	0.1537	0.1853	0.8666	1.353	1.552	1.088	0.1675	1.339	1.814	1.913
138.0	0.1484	0.1195	0.8352	1.174	1.331	0.6724	0.1617	1.075	1.613	1.725
141.0	0.1080	0.1394	0.7206	1.020	1.193	0.1522	0.1716	0.1716	1.408	1.515
144.0	0.1428	0.1051	0.6320	0.8993	1.031	0.2247	0.1196	0.1882	1.202	1.312
147.0	0.1288	0.1348	0.5307	0.7496	0.8711	0.5723	0.1668	0.7724	1.060	1.100
150.0	0.1362	0.1541	0.4537	0.5851	0.7227	0.5004	0.1337	0.7015	0.9538	0.9502
153.0	0.1327	0.1144	0.2469	0.4666	0.5037	0.4808	0.1417	0.6015	0.4801	0.8484
156.0	0.1355	0.1401	0.1280	0.1919	0.1589	0.4450	0.1612	0.5562	0.1525	0.6806
159.0	0.1080	0.1065	0.1984	0.1852	0.2917	0.3961	0.1569	0.4872	0.5257	0.1529
162.0	0.1298	0.1140	0.1471	0.1752	0.3015	0.3204	0.1305	0.3925	0.4095	0.3442
165.0	0.1251	0.1389	0.1080	0.1529	0.1993	0.2712	0.1279	0.3331	0.3016	0.2148
168.0	0.1180	0.1374	0.1130	0.1309	0.1649	0.2360	0.1781	0.2291	0.2447	0.1556
171.0	0.1157	0.1181	0.1510	0.1222	0.1761	0.1797	0.1330	0.2169	0.2197	0.1667
174.0	0.1339	0.1518	0.1286	0.1393	0.1371	0.1864	0.1374	0.2166	0.1426	0.1530
177.0	0.1252	0.1241	0.1460	0.1512	0.1332	0.1272	0.1237	0.1562	0.1159	0.1244
180.0	0.1481	0.1286	0.1673	0.1404	0.1568	0.1586	0.1009	0.1471	0.1170	0.1231
G/C	300.0	330.0								
0.0	32.10	32.11								
3.0	31.98	31.95								
6.0	31.82	31.70								
9.0	31.60	31.38								
12.0	31.37	30.94								
15.0	31.05	30.43								
18.0	30.71	29.88								
21.0	30.22	29.56								
24.0	29.73	29.55								
27.0	29.18	29.86								
30.0	28.55	29.78								

C Range: 0 - 360DEG
C Interval: 30.0DEG
Test Speed: HIGH
Temperature:25.3DEG
Operators:Lanjunbao
Test Date:2016-10-20

g Range: 0 - 180DEG
g Interval: 1.0DEG
Test System:EVERFINE GO-R3000(2M2D) SYSTEM V1.0.203
Humidity:65.0%
Test Distance:2.500m [K=1.0094]
Remarks: LAMP:HL-A-3014H421W-S1-08-HR 3000K
1W DC 24V
30minutes warm-up



Photometric Data Table [cd]

33.0	27.89	29.12
36.0	27.16	28.21
39.0	26.44	27.07
42.0	25.67	25.83
45.0	24.80	24.56
48.0	23.88	23.26
51.0	22.90	21.97
54.0	21.95	20.64
57.0	21.05	19.21
60.0	20.15	17.62
63.0	19.30	15.74
66.0	18.46	13.93
69.0	17.64	12.72
72.0	16.93	11.76
75.0	16.37	11.12
78.0	15.99	10.49
81.0	15.41	9.555
84.0	14.62	8.695
87.0	12.85	7.623
90.0	11.07	6.780
93.0	0.1516	0.3765
96.0	0.1514	3.299
99.0	0.1697	2.780
102.0	0.1311	1.234
105.0	0.1451	0.4817
108.0	0.1426	0.1467
111.0	0.1317	0.0929
114.0	0.4757	0.1174
117.0	0.9232	0.1113
120.0	1.246	0.1268
123.0	1.421	0.1129
126.0	1.499	0.1122
129.0	1.512	0.2048
132.0	1.470	0.2543
135.0	1.387	0.2930
138.0	1.233	0.3601
141.0	1.125	0.1744
144.0	0.9578	0.1326
147.0	0.8081	0.2004
150.0	0.5866	0.2835
153.0	0.2152	0.1953
156.0	0.1339	0.2427
159.0	0.3846	0.1766
162.0	0.3107	0.1569
165.0	0.2172	0.1523
168.0	0.1651	0.1744
171.0	0.1620	0.1204
174.0	0.1590	0.1313
177.0	0.1418	0.1517
180.0	0.1084	0.1293

C Range: 0 - 360DEG
 C Interval: 30.0DEG
 Test Speed: HIGH
 Temperature:25.3DEG
 Operators:Lanjunbao
 Test Date:2016-10-20

g Range: 0 - 180DEG
 g Interval: 1.0DEG
 Test System:EVERFINE GO-R3000(2M2D) SYSTEM V1.0.203
 Humidity:65.0%
 Test Distance:2.500m [K=1.0094]
 Remarks: LAMP:HL-A-3014H421W-S1-08-HR 3000K
 1W DC 24V
 30minutes warm-up